

THE VERMONT STATE HOUSE

A Tour of the Vermont State House

The Office of the Sergeant at Arms
and
The Capitol Police

Information and Rules
Relating to the Use of the State House

A TOUR OF THE VERMONT STATE HOUSE

First Floor

This State House is Vermont's third and was built in 1859 on the same site as the second. It was reconstructed with a similar plan, but on a larger scale and with a distinctly different ornamental scheme reflecting the Renaissance Revival style popular at the time. The State House was rebuilt at a cost of \$150,000 after a fire in 1857 destroyed its predecessor. Today it remains one of the nation's oldest and best preserved state capitols still in use.

The building is surmounted by a gold dome and statue of Agriculture. Vermont is one of nine state capitols with a gilded dome. The dome is 57 feet high and is made of wood, sheathed in copper, and covered with 23.75 carat gold leaf, as pure as can be obtained. The original statue of Agriculture atop the dome was carved by Brattleboro sculptor Larkin Mead. But in 1938 the wooden statue was found to have rotted and was in danger of toppling off the dome. Eighty-six-year-old Sergeant at Arms Dwight Dwinell volunteered to carve a new statue with the help of his janitorial staff. It is 14 feet tall and mounted on a six-foot pedestal.

On the lawn flanking the State House are two Spanish naval guns that were captured from a Spanish cruiser at the Battle of Manila Bay in 1898 during the Spanish–American War. The commander of the American fleet, which destroyed 11 Spanish ships and captured several others without any loss of American life, was Admiral George Dewey. The Admiral was born in a house that used to stand directly across the street from the State House, and as a boy, he used to play on the front steps of the building.

On the front portico, which is the only remaining portion of the earlier Greek Revival State House of the 1830s, stands a statue of Ethan Allen, fabled leader of the Green Mountain Boys. The original marble sculpture was also by the hand of Larkin Mead, but was replaced by a replica in 1941 due to deterioration from exposure to weather.

Upon entering the main lobby of the State House, you will see the only work of art by Larkin Mead that remains in the Capitol, the bust of Abraham Lincoln in the Hall of Inscriptions. This bust was done in preparation for the large bronze statue Mead created for Lincoln's tomb in Springfield, Illinois. Throughout the lobby is a marble floor that exhibits white tiles from Danby, Vermont and black tiles from Isle La Motte on Lake Champlain. If you look closely, you will see fossils embedded in the black tiles. Today we recognize these fossils as part of the world's oldest reef – nearly one-half billion years old.

Portraits in this lobby include the two naval heroes of the Spanish–American War, Admirals George Dewey of Montpelier and Charles Clark of Bradford. The two presidents of the United States from Vermont are also portrayed here, Calvin Coolidge of Plymouth Notch and Chester Arthur of Fairfield.

Second Floor

The second floor lobby or House Vestibule has been commonly referred to as the Hall of Flags. It contains glass cases which once housed some of the 68 flags carried by Vermont regiments in the Civil War. Today these cases house exhibits that convey “Vermont in the Civil War” and “The State House in the Civil War,” installed in honor of the Civil War Sesquicentennial, 2011–2015. The lobby has been restored to the way it looked in 1859 when the State House was first built. Note the elaborate ornamental plaster of the ceiling, replications of the original gas chandeliers which bear cherubs dancing with tambourines in their hands, and the original window treatments.

The carpet is an exact replica of the original with oak leaves and acorns sprinkled across its surface. In plaster niches flanking the entrance to the House are William Henry Rinehart’s *Pioneer* and *Indian*, cast expressly for the State House when it was built.

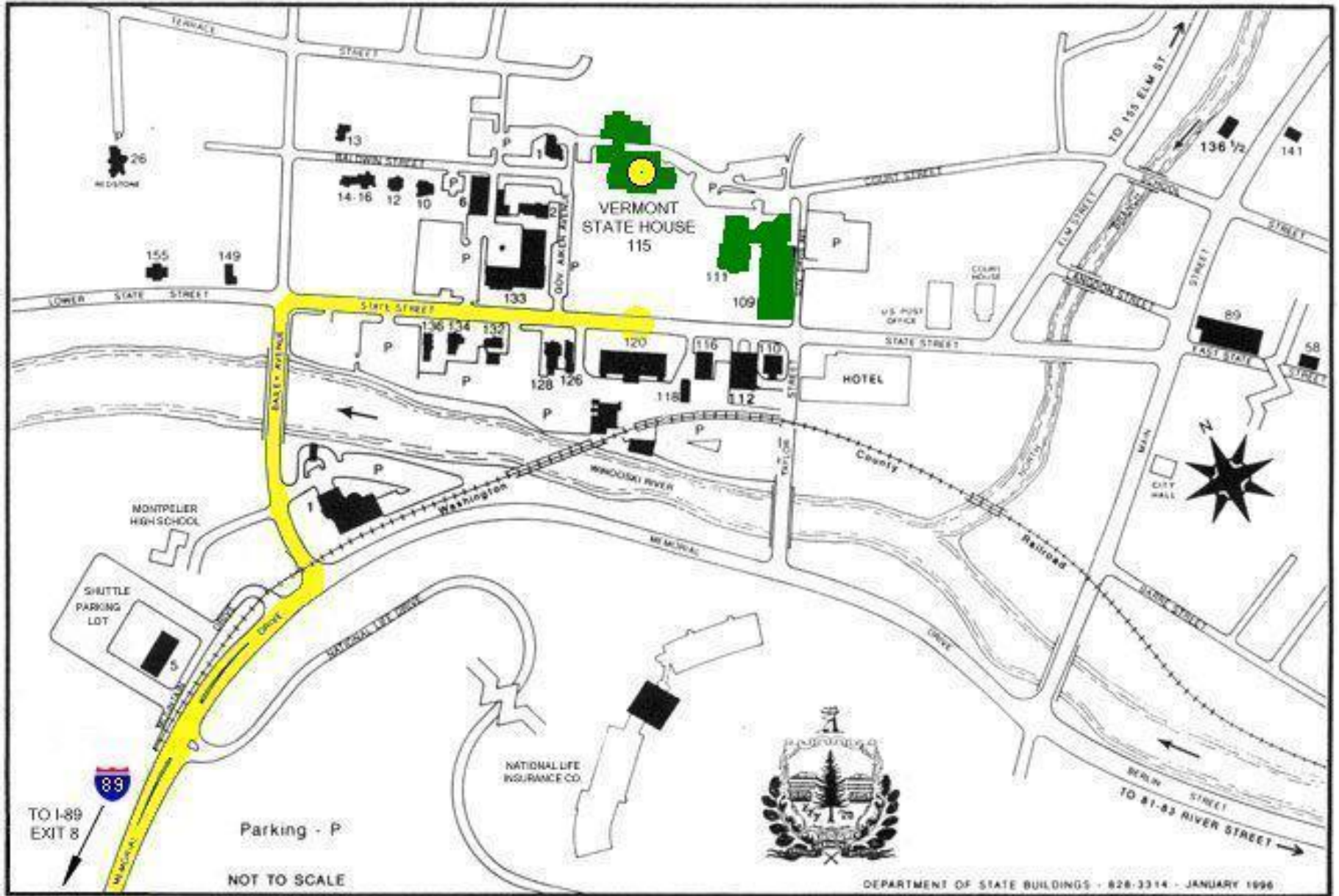
The House Chamber has been fully restored to the way it looked when first created in 1859. The plaster lotus blossom in the center of the ceiling includes petals that weigh approximately 500 pounds each. From its center hangs the original bronze and gilt gas chandelier by Cornelius and Baker of Philadelphia. It includes allegorical figures of *Commerce*, *Prudence*, *Eloquence*, and *Science* alternating with four copies of Hiram Powers’s famous statue of the *Greek Slave*, an abolitionist statement in this pre-Civil War building. On the underside of the chandelier are eight copies of Vermont’s Coat of Arms. The historic portrait of George Washington was rescued from the fire which destroyed the previous State House in 1857. Frame and all, this 1837 copy of Gilbert Stuart’s original was rehung in the same location in the present State House, above the Speaker’s rostrum. Above it is the Vermont Coat of Arms, carved of pine, painted, and gilded for the chamber in 1859. The carpet, draperies, and upholstered furniture are all just as they were originally.

The Senate Chamber has also been fully restored to its original mid-19th century glory. It too includes virtually all of its original furnishings from the 1850s. With only 30 members, the Senate Chamber is an extraordinarily intimate yet grand room. Renaissance and Rococo Revival furnishings combine with the elliptically shaped classical architecture to create this accessible elegance. The elaborate rostrum was hand-carved with Vermont’s Coat of Arms in its center and is surmounted with gas lamps that symbolize the muses of *Inspiration* and *Meditation*. The magnificent gas chandelier, found in 1979 after an absence of over 60 years, was refurbished and reinstalled in 1981. It features a maritime theme with seahorses, water lilies, and figures of Neptune.

The Governor's Office is primarily used when the Legislature is in session or for special ceremonial occasions. It too was meticulously restored to its original look of 1859 by the Friends of the State House in 1984 with replicas of the original carpet, draperies, gaselier, and some furniture. Perhaps the room's most significant piece of furniture is the Constitution Chair which was carved from timbers taken from the famous frigate, the U.S.S. Constitution, known as "Old Ironsides," and has served as Vermont's Governor's chair since its presentation to the State in 1858.

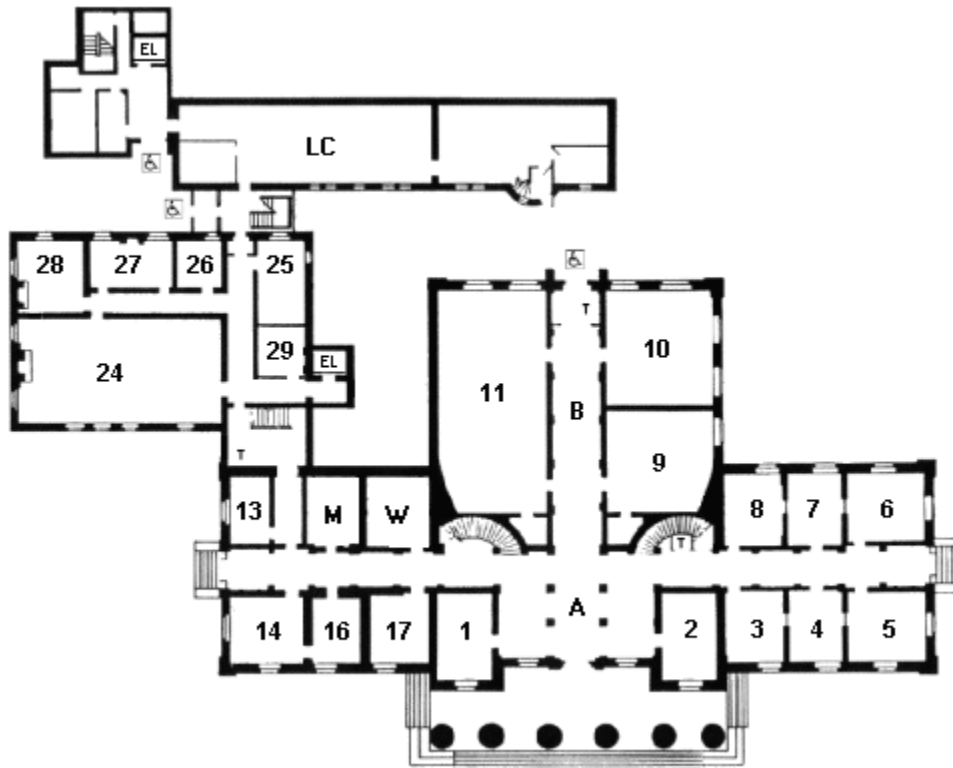
The Cedar Creek Reception Room is the one room on the second floor that has been restored to a later period in State House history. Dominated by the 20- by 10-foot painting, *The Battle of Cedar Creek*, the chamber once served as the State Library until it was transformed into a reception room in 1888 and redecorated. Elaborate wall stencils, bent brass gas chandeliers, an Oriental-inspired carpet, and stained glass skylights brought the Gilded Age to the Vermont State House.


The Battle of Cedar Creek was painted by Julian Scott from 1871 to 1874 for the State House. It commemorates the battle which veterans considered Vermont's finest moment in the Civil War. The battle was fought in Virginia's Shenandoah Valley in October 1864, with the Old Vermont Brigade in the center of the canvas, leading the rally that would halt a Union retreat. Scott was a native of Johnson, Vermont who won one of the first Medals of Honor ever awarded for an act of valor at another Civil War battle, Lee's Mills.



Vermont's Historic State House

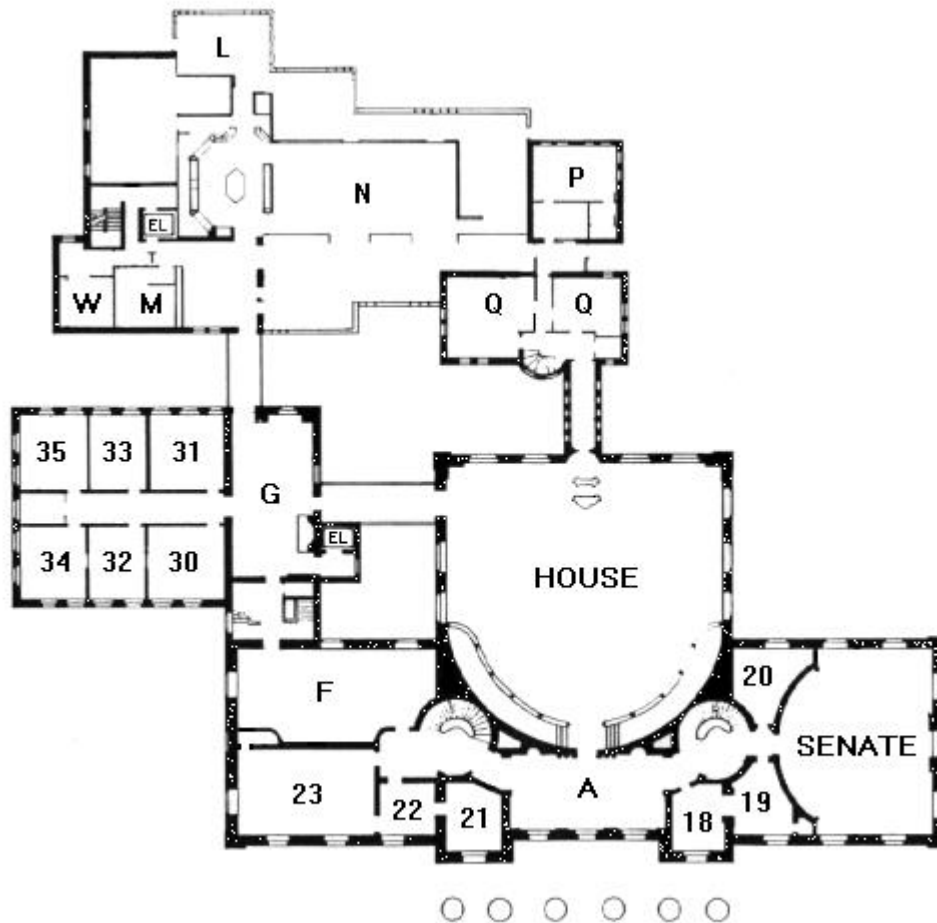
First Floor



ROOM	KEY	ROOM	KEY
1	Senate Judiciary Committee	17	Senate Health and Welfare Committee
2	Sergeant At Arms	24	Legislative Lounge (Old Supreme Court Chamber)
3	Senate Transportation Committee	25	Copy Center
4	Senate Government Operations Committee	26	Senate Agriculture Committee
5	Senate Appropriations Committee	27	Senate Economic Development, Housing and General Affairs Committee
6	Senate Finance Committee	28	Senate Education Committee
7	Senate Institutions Committee	29	Capitol Police
8	Senate Natural Resources and Energy Committee	A	Lobby
9	Coatroom	B	Hall of Inscriptions (Lincoln Statue)
10	Small Hearing Room	LC	Legislative Council
11	Large Hearing Room	T	Public Telephones
13	President <i>Pro Tempore</i> of the Senate	M&W	Rest Rooms
14	Lt. Governor (President of the Senate)	EL	Elevator
16	Lt. Governor Staff		Accessible Entrances

Vermont's Historic State House

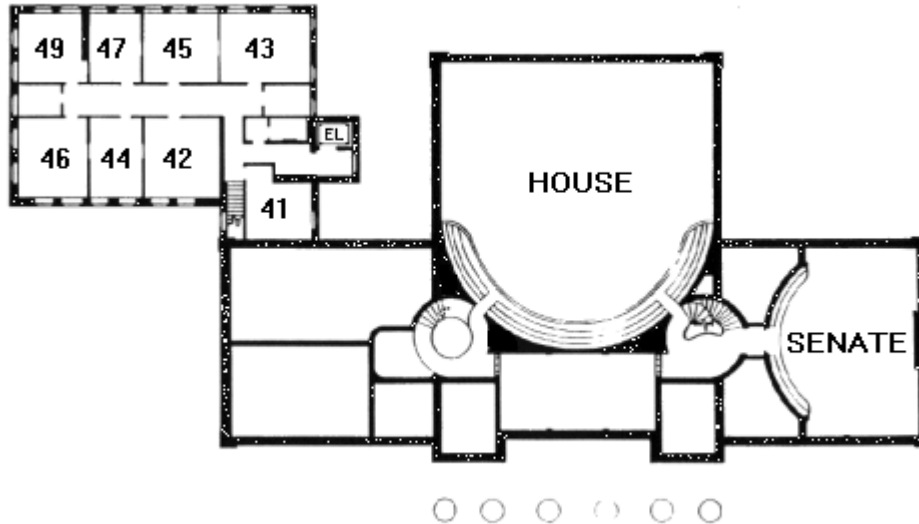
Second Floor



ROOM	KEY	ROOM	KEY
HOUSE	House Chamber	34	House Ways and Means Committee
SENATE	Senate Chamber	35	House Commerce and Economic Development Committee
18	Secretary of the Senate Staff	A	House Vestibule (Hall of the Flags)
19	Secretary of the Senate Staff	F	Cedar Creek Room
20	Senate Coatroom	L	Ethan Allen Room – House Natural Resources & Energy Committee
21	Governor's Staff	N	State House Food Court (Abbey Group)
22	Governor's Staff	P	Speaker of the House
23	Governor's Ceremonial Office	Q	Clerk of the House
30	House Judiciary Committee	T	Public Telephones
31	House Agriculture Committee	M&W	Rest Rooms
32	House Education Committee	EL	Elevator
33	House Corrections and Institutions Committee		

Vermont's Historic State House

Third Floor



ROOM	KEY
41	
42	House Appropriations Committee
43	House Transportation Committee
44	House General, Housing and Military Affairs Committee
45	House Health Care Committee
46	House Human Services Committee
47	House Fish, Wildlife, and Water Resources Committee
49	House Government Operations Committee
HOUSE	House Chamber Balcony
SENATE	Senate Chamber Balcony
EL	Elevator



STATE OF VERMONT
SERGEANT AT ARMS

SERGEANT AT ARMS
AND
CAPITOL POLICE

The Sergeant at Arms is elected biennially by the General Assembly in Joint Session. The present Sergeant at Arms is Janet Miller, who was first elected to the post in 2015. Her assistant is Sidney McLam.

The Office of the Sergeant at Arms is supervised by the Joint Rules Committee, a bipartisan committee composed of leadership of both Houses and established by Joint Rule 5.

In 1999, a Capitol Police Department was created in the Office of the Sergeant at Arms. The Chief of the Capitol Police Department is Les Dimick. Dale Manning and Kurt Snyder serve with him as Capitol Police Officers with Brian Hoar and John Mott as reserve officers.

The Sergeant at Arms is responsible for maintaining security at the State House as well as order among spectators and visitors during sessions of the General Assembly. She serves process and executes orders when required by either chamber. She is also responsible for the repair and maintenance of the interior of the State House, including items of personal property contained within it. It is also her responsibility to employ and supervise the doorkeepers, pages, and other employees to carry out her duties.



STATE OF VERMONT
SERGEANT AT ARMS

CALL SYSTEM

SENATE

The call light is **GREEN**.

When activated for a QUORUM or ROLL CALL, the light flashes for three (3) minutes and will continue until a quorum is present. It will then remain on for the duration of the meeting. The tone is a low, then high sound and will repeat three (3) times at five (5) second intervals.

HOUSE

The call light is **RED**.

When activated for a QUORUM, it flashes for three (3) minutes with a single tone, evenly spaced; it repeats five (5) times. This will continue until a quorum is present. The light remains on for the duration of the meeting.

When a ROLL CALL is needed, the red light will flash with three (3) closely spaced identical tones and will be repeated five (5) times. The light will remain on for the duration of the meeting.



STATE OF VERMONT
SERGEANT AT ARMS

MAIL

First-class mail arrives once a day at approximately 9:00 a.m. First-class mail will be delivered to you. If you are not here, we will place it in your mailbox.

Mail that will not fit in the boxes will be placed on the desk of the member in the chamber.

Mass distribution of items needs to be cleared through the Sergeant at Arms' office and **must** bear the name and telephone number of the sender. These do not need each member's name on the item.

Mail will not be censored.

Outgoing mail pickup is approximately 8:30 a.m. and 2:00 p.m.

Individual mailboxes should be checked twice every day. Mailboxes do not correspond with your seat number.

FAX & E-MAIL

Faxes arrive at the Legislative Council and are delivered promptly. The fax number is 802-828-2424.

E-mail that arrives at the Sergeant at Arms' office will be delivered to respective members of the General Assembly on arrival.

E-mail and faxes containing messages requesting general distribution shall be delivered to the respective Senators and Representatives of the sender, and also to the respective chairs of the House and Senate Committees of jurisdiction.



STATE OF VERMONT
SERGEANT AT ARMS

TELEPHONES

Pay telephones are located throughout the building for use of the public.

Telephones are available in committee rooms and the Legislative Lounge. These are for the use of members only.

Members are asked to use the telephone in the committee room to which they are assigned.

Members are responsible for the use of their assigned code number and should use caution if allowing nonmember usage.

TELEPHONE MESSAGES

There is a toll-free number for constituents to call you at 1-800-322-5616.

The Sergeant at Arms' office is a callback service for you. Constituents' messages will be delivered to their respective Senator(s) and/or Representative(s) only.

If you cannot be contacted, the message will be brought back to this office and an attempt will be made at a later time.

Let us know if you are going to be out of the building or away to allow us to handle your messages accordingly.

Stop by the office at the end of the day to see if you have any messages.

Messages that have not been delivered will be put in your mailbox for the following morning.



STATE OF VERMONT
SERGEANT AT ARMS

EMERGENCY HEALTH SERVICES

In the event of an emergency – Medical, Fire, or Police – you should **dial 9 for an outside line, then 911 IMMEDIATELY.**

In case of an emergency, please also call the Capitol Police at 828-2229 or the Sergeant at Arms' office at 828-2228.

Please note the following list of members of the Sergeant at Arms' staff who currently hold certification in both CPR and Automated External Defibrillator (AED) use. They are trained to help if needed while waiting for an ambulance to arrive.

Les Dimick
Brian Hoar
Dale Manning
Dennis Miles
Janet Miller
Cornelius Reed
Alan Rogers
Kurt Snyder

**CAPITOL POLICE DEPARTMENT
VERMONT STATE HOUSE
115 STATE STREET
MONTPELIER, VT 05633**

PHONE: (802) 828-2229 ▪ FAX: (802) 828-2424

Active Shooter Response

Please take time to watch the following video:

<http://www.homeland1.com/homeland-security-news/1321055-run-hide-fight-dhs-releases-psa-on-how-to-survive-a-mass-shooting/>

If you need to shelter in place, consider the following:

In your Office:

- Turn off your cell phone.
- Shut and lock your door (if you do not have a lock, consider a wedge under the door).
- Turn off your lights.
- Close any shades, especially those off the hallway.
- Conceal yourself in a place where you cannot easily be seen from the door or outside.
- If possible, quietly notify other people in the building.
- If possible, call Capitol Police (Ext. 2229) quietly or call 9-911.
- Stay sheltered until you get an all-clear from Law Enforcement.
- Do not take any action that would put you in harm's way.

If you are away from your office:

- Seek shelter in a nearby office or in an area that has been identified as secure, such as a supply room with a locking door.
- Avoid hallways or open areas such as cubicles, lobbies, or conference rooms.
- Turn off the lights.
- Conceal yourself so that you cannot easily be seen from the doorway.
- If possible, quietly notify other people in the building of the event.
- If possible, call Capitol Police (Ext. 2229) quietly or call 9-911.
- Stay sheltered until you get an all-clear from Law Enforcement.



STATE OF VERMONT
SERGEANT AT ARMS

FOOD IN BUILDING POLICY

Food and drink are NOT
allowed in the House Chamber,
Lounge, or Room 11
(water is permitted).

Food, drink, and water are NOT
allowed in the Senate Chamber.

All food and drink items should
be consumed in the Cafeteria.



STATE OF VERMONT
SERGEANT AT ARMS

REQUEST FOR USE OF STATE HOUSE MEETING ROOMS

Reservations

The Sergeant at Arms' office is responsible for reserving public rooms in the State House for use by outside groups, as well as Legislative use. You may reserve a State House public room by calling the office at (802) 828-2228.

When reserving the room, please give as much detailed information as possible, i.e., who/what group the room is being reserved for, the reason the room is being reserved, contact person, and all contact information.

Legislative meetings have priority for room use. There is a chance your group may be moved if that room is needed for a legislative meeting. If it is necessary to move your group to another room, we will try to give you notice in advance, but may, in some cases, have to move your group with less or NO notice. There is also the possibility that no other rooms will be available.

Set Up and Use of Equipment

We are unable to provide equipment and copying service to outside groups. If you reserve a room, you will need to bring in and set up your own equipment (projector, laptop, easels, recording equipment, speakers, etc.). We can, however, provide a projector screen and microphone system – if you will need these items, please request them when reserving the room. You will also need to bring in your own copies of documents, materials, and supplies (pens, pencils, notepads, CDs, etc.).

Recording devices and speakers, which are already in the room, may NOT be moved. Do NOT MOVE TABLES OR CHAIRS.

After the meeting, please return the room to the condition it was in when you arrived.

Fee for Security

If you reserve a room during nonregular business hours (before 7:45 am or after 4:30 pm in the nonlegislative months), you will be billed for overtime for our police officers, at a charge of \$60 per hour with a 4 (four) hour minimum charge.

Food and Drink Restrictions

Food and drink are only allowed in Room 10, the Cafeteria, and Cedar Creek Room for receptions. You may not charge for any food or drink being served in these locations. **Food and drink in any other location in the building is prohibited.**

Parking

There is very little parking at the State House. All parties in your group are responsible for finding off-site parking. Information about shuttles from off-site parking is available at <http://bgs.vermont.gov/security/shuttle> and also at the Sergeant at Arms' office.

REQUEST FOR USE OF THE STATE HOUSE



Organization: _____

Contact Person: _____

Daytime Telephone #: _____

Cell Phone #: _____

E-mail: _____

Address: _____

Date of event: _____ Start and End time: _____

Requesting use of: Cafeteria House Chamber Senate Chamber
 Room 10 Room 11 Ethan Allen Cedar Creek Committee Rooms

Number of people anticipated: _____

Services requested (circle): Podium Screen Microphones

Purpose of Event: _____

Legislative meetings have priority for room use so your group may be moved if that room is needed for a legislative meeting. Relocating to another room is based on availability of vacant rooms. If no other rooms are available, you may have NO meeting space in the State House. We will try to give you notice in advance, but your group may be moved with little or NO notice.

Permission to use either Chamber may be granted by the Office of the Sergeant at Arms with the permission of the Speaker of the House or the Secretary of the Senate. The Sergeant at Arms may grant permission to use other areas of the State House and this approval may be subject to restrictions and conditioned upon your compliance with all general rules relating to conduct in the State House.

If you reserve a room during nonregular business hours (before 7:45 a.m. or after 4:30 p.m. in the nonlegislative months), you will be billed for overtime for our police officers, at a charge of \$60 per hour with a 4 (four) hour minimum charge. If you do not show up at the scheduled time and have not called previously to cancel your reservation, you will still be charged the minimum of \$240 for having a Capitol Police Officer present.

This signature indicates I have read and will adhere to the conditions of use of the Vermont State House and am responsible for returning the room to its prior condition. If not, I understand my organization may not be allowed use of a room in the future.

PLEASE RETURN FORM TO THE OFFICE OF THE SERGEANT AT ARMS.

115 State Street
Montpelier, VT 05633
802-828-2228
sgtatarms@leg.state.vt.us



STATE OF VERMONT
SERGEANT AT ARMS

LEGISLATIVE LOUNGE USE

The lounge, its telephones and computer terminals are for the use of legislators only.

Guests, staff, or legislative interns must be accompanied by a member of the General Assembly while in the lounge.

No food or drink (water only) is allowed in the lounge area.

ROOM 10 AND ROOM 11 USE

Rooms 10 and 11 can be used for both legislative and outside meetings. If a legislative committee needs the use of either room and an outside meeting is scheduled, the Legislature takes precedence.

Meetings **MUST** be scheduled through the Sergeant at Arms' office and a Use of the State House form must be filled out. Guidelines for use of Rooms 10 and 11 are detailed in the Use of the State House form.

ONLY water is allowed in Room 11. Food and drink are allowed in Room 10.

If either or both of these rooms are in use, they must be vacated for purposes of a caucus.



STATE OF VERMONT
SERGEANT AT ARMS

HOURS / RULES OF CONDUCT RE: PUBLIC USE OF THE STATE HOUSE

Pursuant to Rule 26(e) of the Joint Rules of the Senate and the House of Representatives, the Sergeant at Arms adopts the following rules for the general supervision of conduct within the State House:

Hours of Public Admission

When the General Assembly is not in session, the State House is open to the public from 7:45 a.m. to 4:15 p.m., Monday through Friday. On weekends and official holidays, the State House shall be closed.

When the General Assembly is in session, the State House is officially open to the public from 7:45 a.m. to 4:30 p.m. Typically, the building will remain open Mondays and Fridays until 5 p.m.; and Tuesday through Thursday until 8 p.m. for the convenience of Legislators. For the purpose of this rule, the General Assembly shall be considered to be in session whenever either chamber is meeting, or a committee of either chamber is meeting.

These hours of public admission do not apply to Members of the General Assembly, employees of the Legislature, or employees of the State who are performing custodial or security functions at the State House.

Rules of Conduct

- Children under 12 years of age may be admitted to the State House only if accompanied by an adult.
- Shoes and shirts must be worn by all persons admitted to the State House.
- No alcohol may be consumed in the State House except at official functions with the approval of the Sergeant at Arms. No illegal drugs may be possessed or consumed by persons in the State House at any time. Any person under the influence of drugs or alcohol may be refused admission to or evicted from the State House.
- Smoking of cigarettes or other tobacco products is not permitted.
- No weapons of any type are allowed in the building at any time.
- No signs in either Chamber.



STATE OF VERMONT
SERGEANT AT ARMS

PUBLIC HEARING GUIDE

Hearings must be scheduled through the Sergeant at Arms' office to allow us to insert the information into the proper calendars. A minimum of three (3) days' notice would be appreciated. Please use the Notice of Public Hearing form when scheduling with our office.

Please take note of the following recommendations regarding Public Hearings.

- Hearings must be scheduled around the agenda of the main legislative body. Availability of the legislative chambers, Room 10, and Room 11 is subject to preemption at any time, based on the needs of the legislative bodies.
- Members wish to remain in this building if their respective chamber is in session.
- Room capacity numbers must be considered.
 - House Chamber holds 350 persons
 - House balcony holds 150 persons
 - Senate Chamber holds 50 persons MAXIMUM (due to single exit)
 - Senate balcony holds 25 persons
 - Room 10 holds 50 persons MAXIMUM (due to single exit)
 - Room 11 holds 100 persons
 - Cafeteria holds 206 persons
- Note that exit aisles of at least 44 inches must be maintained

Off-site locations should be used for hearings with expected attendance of over 500.

- Any cost will be borne by the legislative budget
- If needed, consider more than one date and location

Cancellation of scheduled meetings should be made at a minimum of five (5) days in advance of the scheduled date.



STATE OF VERMONT
SERGEANT AT ARMS

NOTICE OF PUBLIC HEARING

Committees must book rooms for all public hearings to be held in the State House through the Sergeant at Arms' office.

Please complete a public hearing form at our office. We are responsible for getting the proper information to the Clerk of the House office and the Secretary of the Senate office for placement in the Notice Calendar.

DATE: _____

ROOM: _____

TIME: _____

BILL #: _____

SUBJECT: _____

COMMITTEE: _____

CLERK OF THE
COMMITTEE: _____

COMMITTEE
ASSISTANT: _____



STATE OF VERMONT
SERGEANT AT ARMS

VISITING GROUPS

- Groups who wish to book guided tours of the State House during the legislative session must schedule in advance with our Tours Coordinator, Angelica Caterino, at 802-828-1411 or ACaterino@leg.state.vt.us.
- School visits are one of our largest audiences. Grades 4 and above are routinely booked for tours and often observe the Legislature in session. Younger students are permitted to visit on days when the Legislature is not in session.
- School visits are typically limited to no more than 100 students per day. Guided tours should occur in groups of 25 or fewer per tour. It becomes challenging to accommodate more than this when the building is so busy.
- If visiting groups intend to dine in the cafeteria, the Sergeant at Arms' office and the Cafeteria need to be notified of the number of people. School groups are asked to not use the cafeteria from 11:30 a.m. to 12:30 p.m. so as not to interfere with the General Assembly schedule.
- School groups must provide a list of all attendees on the day of their visit to the Sergeant at Arms upon arrival at the State House.



STATE OF VERMONT
SERGEANT AT ARMS

CARD ROOM USAGE GUIDELINES

The calendar is always booked a year in advance.

1. Reservations for the Card Room are made for the Legislative Session of the following year. The Sergeant at Arms' office will begin accepting reservation requests for the 2018 Legislative Session starting on January 3, 2017. Please submit your request form, available at the Sergeant at Arms' office or on our website, by close of business on February 3, 2017. By February 15, 2017, we will randomly choose 67 request forms from all the entries; this will take us from January 3, 2018 to May 4, 2018. Please note these dates are tentative based on the Legislative Session.
2. Due to demand, only one day per year may be reserved for each organization.
3. If an organization needs a specific date, for example, National Awareness Days, please indicate this on the request form. We will try to accommodate these dates if you are chosen. All other requests will be scheduled in chosen order, starting with the first day of session.
4. A waiting list will be compiled after the calendar is filled. If an organization has to cancel, the Sergeant at Arms will go down the list, in order, for a replacement.
5. No posters or other objects can be attached to the walls or ceiling of the Card Room.
6. All displays must be confined to the North end of the room, adjacent to the ramp, causing minimal disruption to the existing furnishings and not interfering with the free flow of pedestrian traffic in all four directions.
7. People staffing organizational displays in the Card Room must not overtly solicit the attention of passers-by. They may politely invite that attention, but must refrain from stopping legislators and others who clearly have no interest and are only passing through to get someplace else.
8. No food is allowed without specific approval of the Sergeant at Arms.
9. No press conferences are allowed.



STATE OF VERMONT
SERGEANT AT ARMS

USE OF STATE HOUSE LAWN

Contact Nancy McAvoy 802-828-1506
Buildings & General Services

The Department of Buildings and General Services, in conjunction with the State House Sergeant at Arms, asks for your cooperation in following the guidelines listed below while using the State House lawn. Failure to do so will result in your loss of privileges in the future.

1. No vehicles on pavers or lawn.
2. Do not fasten banners or nail signs to trees, buildings, etc.
3. No large tents without prior approval.
4. Clean up grounds after events and remove trash and debris from site.
5. Keep people and animals out of flower beds.
6. No climbing in the trees.
7. Any holes made in the ground or pavements have to be refilled.
8. No jumping of skateboards or roller blades on State grounds.